



Garder cette notice pour les utilisations futures
 Guardar este manual para futuras utilizaciones
 Guardar este manual para as utilizações futuras
 Zachowaj tę instrukcję do wykorzystania w przyszłości



ISO/PAS 11154

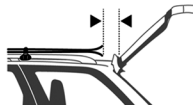
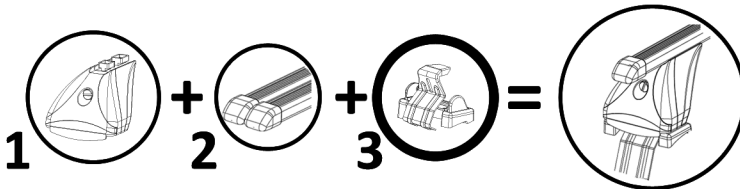
n° K267



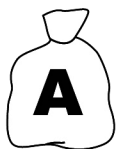
Ford Fiesta V

5

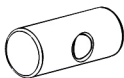
11/2001->08/2008



FeuVert



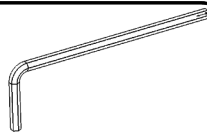
M6x50
4762.650
x4



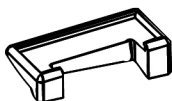
162100001
x4



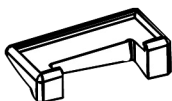
659106
x4



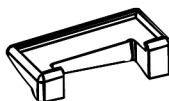
100005
x1



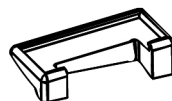
x1
1126701



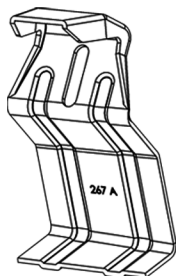
x1
1126702



x1
1126703



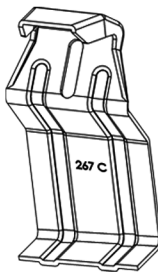
x1
1126704



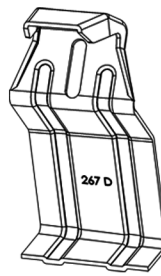
x1
267 A



x1
267 B

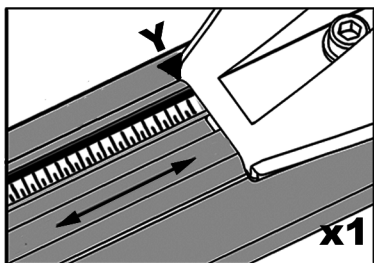
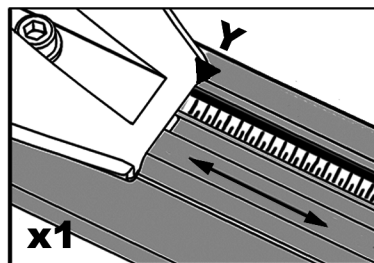
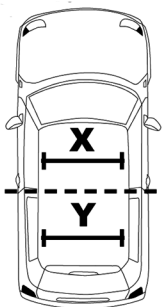
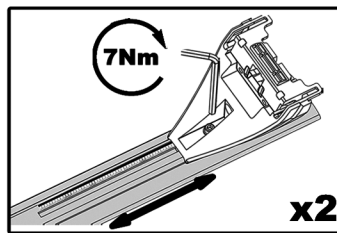
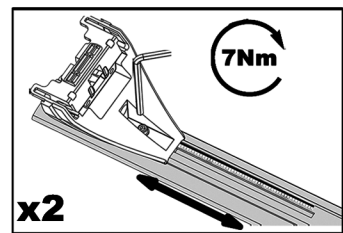
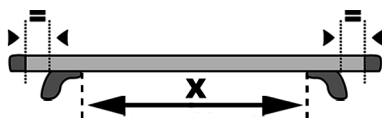
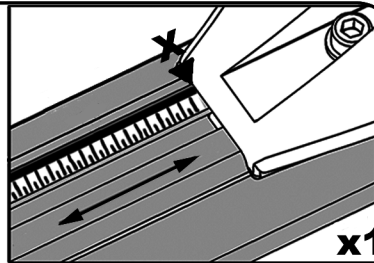
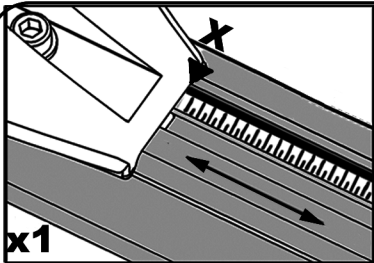


x1
267 C

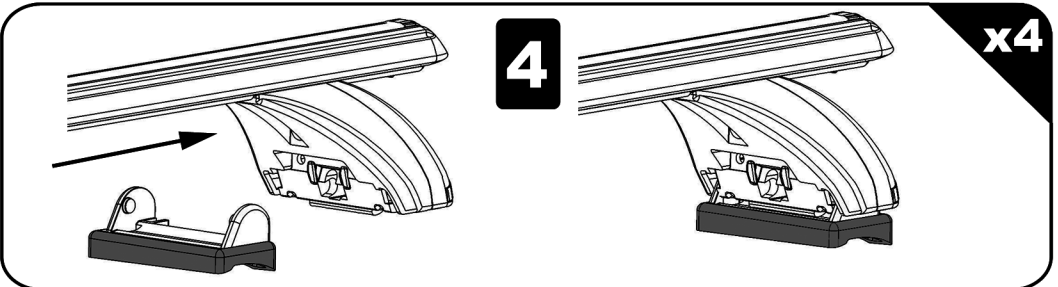
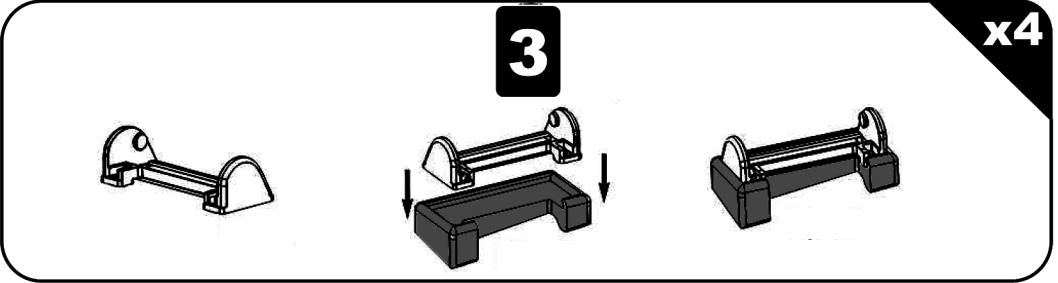
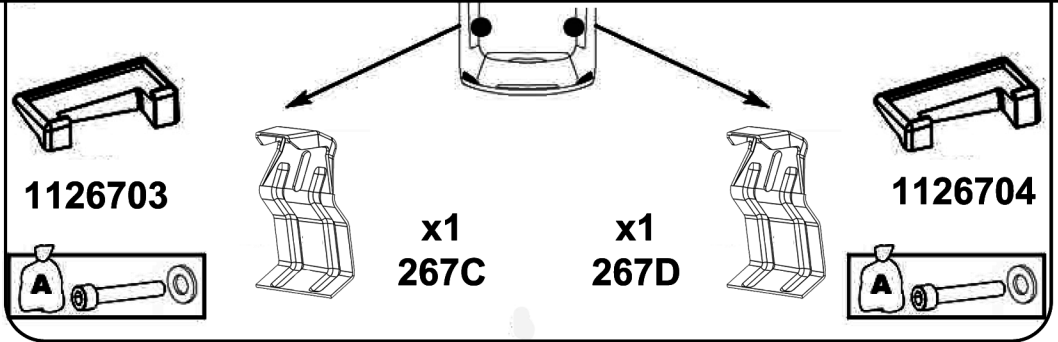
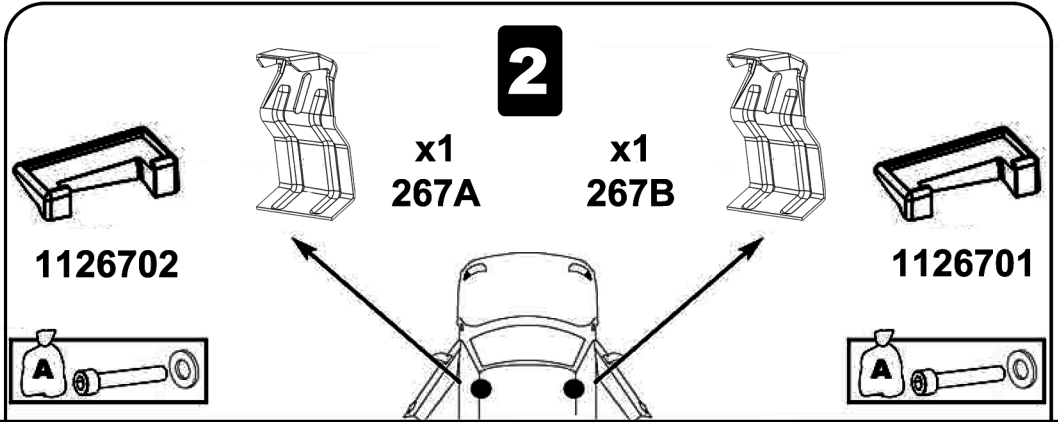


x1
267 D

1

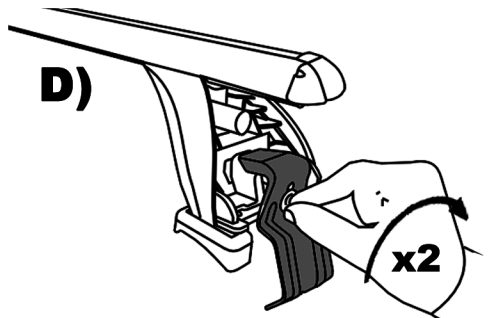
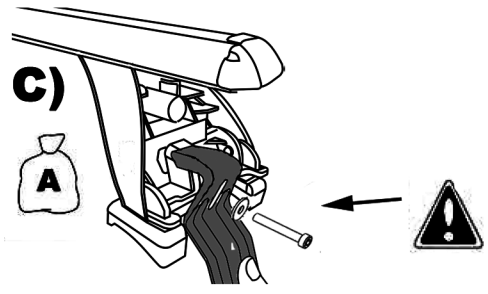
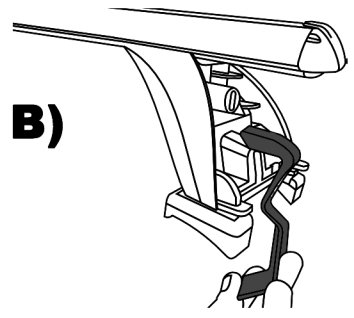
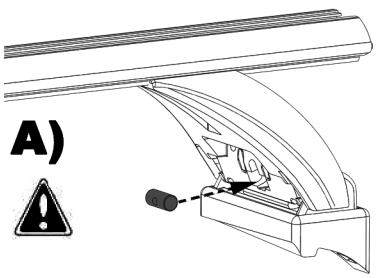


| | X | Y |
|---------------|---------|-------|
| Ford Fiesta V | 84,5 cm | 80 cm |



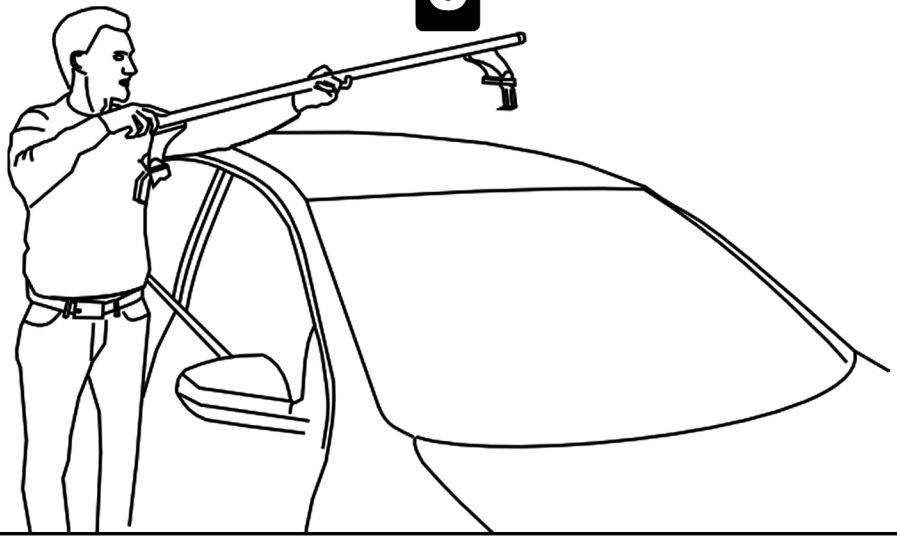
5

x4

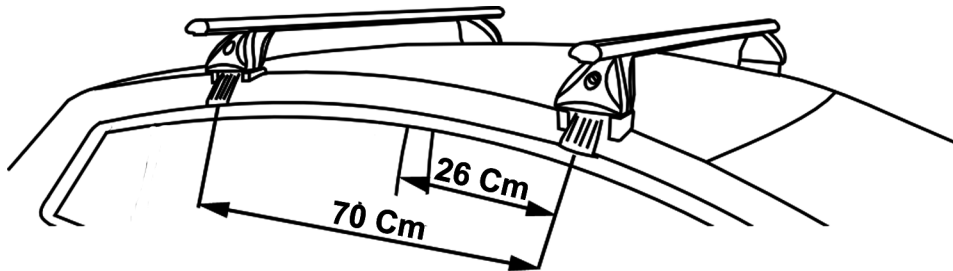


6

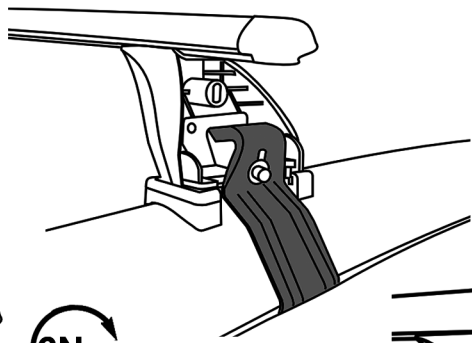
x2



7

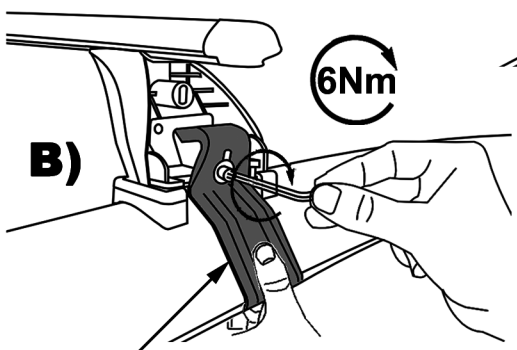


A)

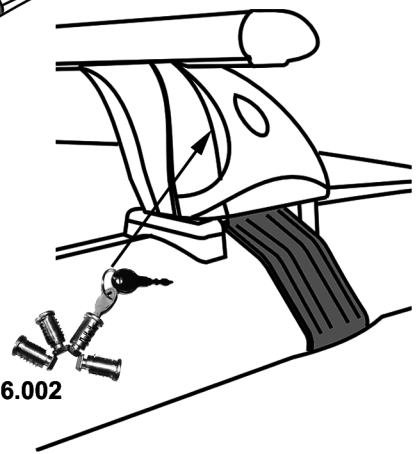


6Nm

B)



C)



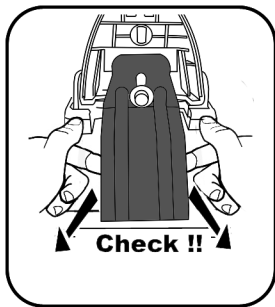
Push

(F) Serrer alternativement chaque coté

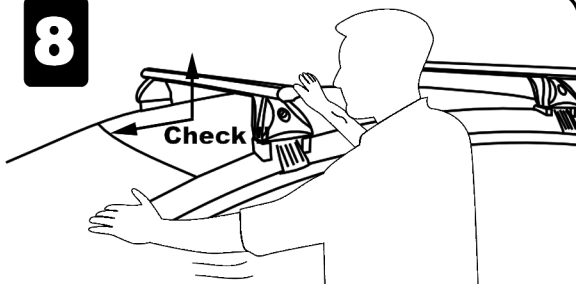
(E) Apriete alternativamente desde cada lado

(P) Apertar alternadamente de cada lado

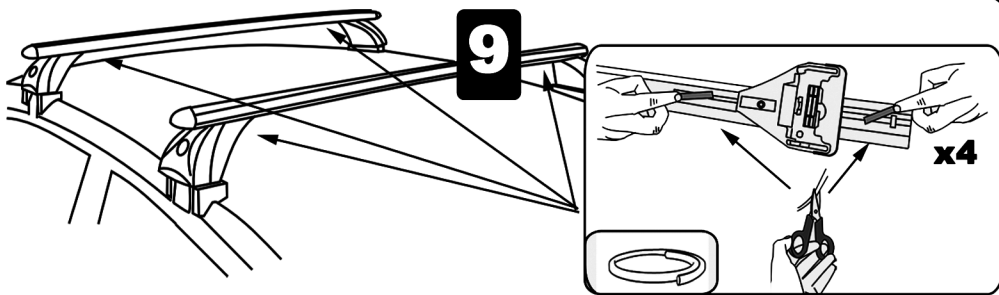
(PL) Dokręcić na przemian z każdej strony



8



9

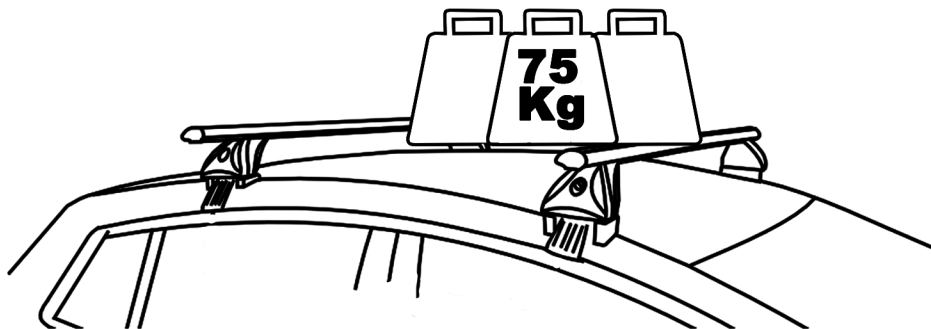


(F) Charge maximale supportée par le jeu de barres :75 kg. Reportez vous au manuel d'utilisation du véhicule pour connaître la charge maximale admissible par le pavillon de votre véhicule.

(E) Carga máxima 75 kg, consulte el manual del vehículo para conocer la carga máxima admitida del techo de su vehículo.

(PT) Carga máxima 75 kg, consulte o manual do veículo para saber o máximo permitido pelo telhado de sua carga do veículo

(PL) Maksymalne obciążenie zestawu relingów wynosi 75 kg. Sprawdzić w podręczniku obsługi pojazdu jakie jest maksymalne dopuszczalne obciążenie dachu pojazdu.



(F) Pour le démontage, réaliser les étapes décrites dans le sens inverse

(E) Para desmontar, realice los pasos a la inversa

(PT) Para remover, siga os passos na ordem inversa

(PL) Podczas demontażu, wykonać powyższe czynności w odwrotnej kolejności

